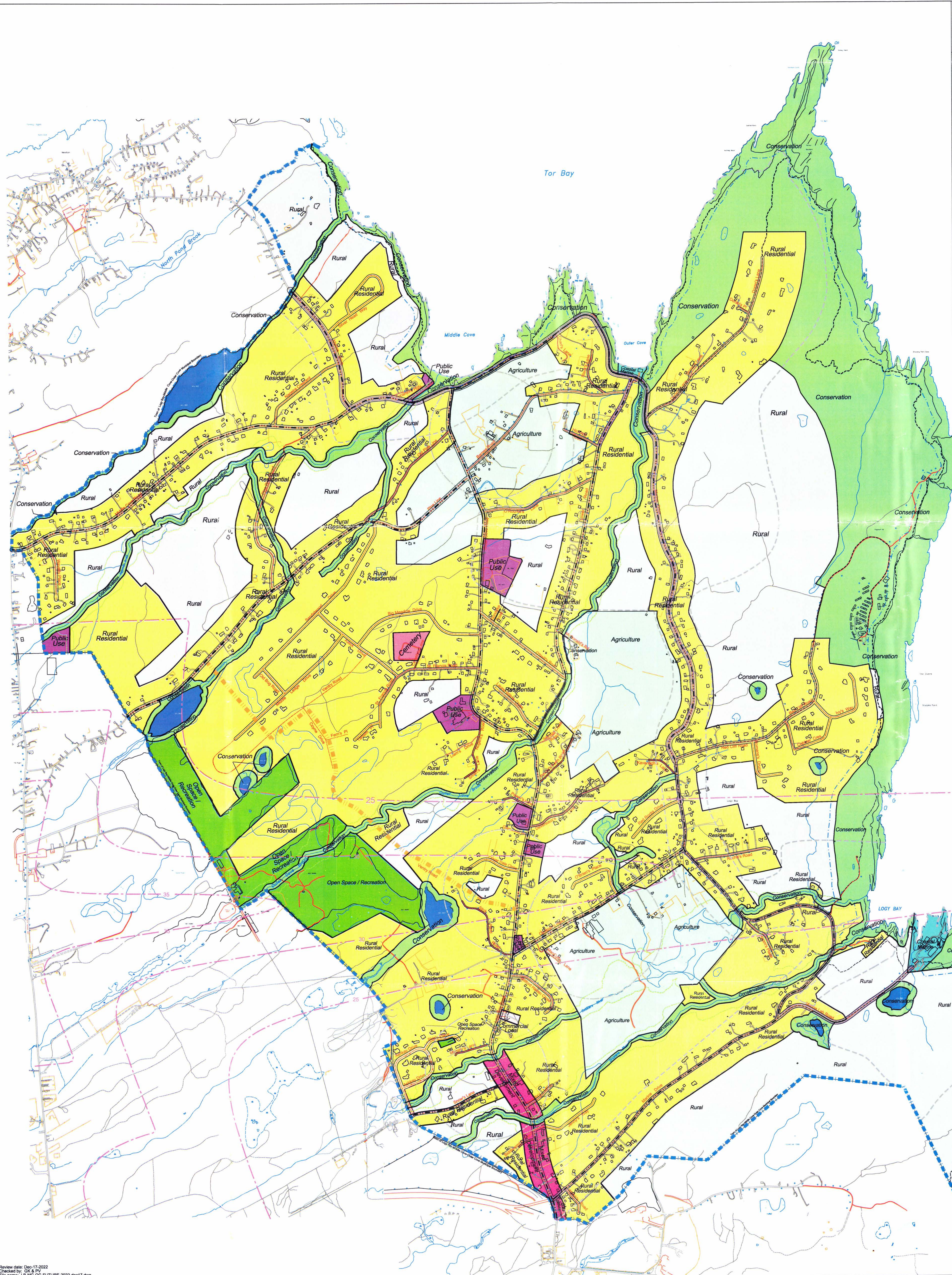


Town of Logy Bay-Middle Cove-Outer Cove
Municipal Plan 2022
Future Land Use - Map 1

- Agriculture
- Cemetery
- Coastal Marine
- Commercial Local
- Conservation
- Mixed Development
- Open Space / Recreation
- Public Use
- Rural
- Rural Residential

- Municipal and Planning Area Boundary
- Coastal Reservation (30m)
- Street Hierarchy**
- Local Street
- Collector Street
- East Coast Trail
- Scenic Road
- Overlay**
- Proposed North South Collector Road
- Noise Exposure Forecast (NEF) Contour
- Scenic Route View Plane Boundary
- Flood Risk Corridor Limits
- Agricultural Buffer (300m)



**Municipal Plan
REGISTRATION**

Number 2945-2023-000

Date 26 JANUARY 2023

Signature [Signature]

Filed at Town of Logy Bay-Middle Cove-Outer Cove, Newfoundland and Labrador

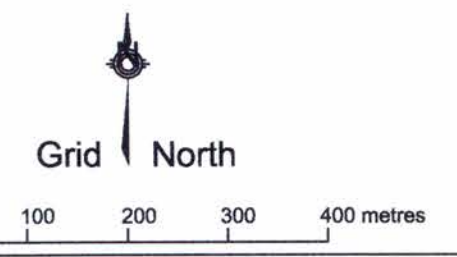
The 19th day of December, 2022

[Signature]
Dennis Hickey, Mayor

[Signature]
Susan Arns, Town Manager

I certify that Municipal Plan 2022 has been prepared in accordance with the requirements of the Urban and Rural Planning Act, 2000.

[Signature]
Stephen Jewczyk, FQJP



Review date: Dec 17, 2022
Checked by: GK & PV
File name: Lp-MC-OC-FUTURE-2022-dec17.dwg